

WebGhost™ Quick Reference

This guide is distributed with software that includes an end-user agreement, this guide, as well as the software described in it, is furnished under license and may be used or copied only in accordance with the terms of such license. Except as permitted by any such license, no part of this guide may be reproduced, stored in a retrieval system, or transmitted, in any form or by any other means, electronic, mechanical, recording, or otherwise, without the prior written permission of Macware, Inc. Please note that the content in this guide is protected under copyright law even if it is not distributed with the software that includes an end-user agreement. The content of this guide is furnished for informational use only, is subject to change without notice, and should not be construed as a commitment by Macware, Inc. Macware, Inc. assumes no responsibility or liability for any errors or inaccuracies that may appear in the informational content contained in this guide.

©2007 Macware, Inc. All rights reserved.

Macware, the Macware logo, WebGhost, and macXware are either trademarks or registered trademarks of Summitsoft Corporation or Macware, Inc. in the United States and/or other countries. Apple, Mac, the Mac logo, the Universal logo, the Made for Mac logo, Macintosh, G3, eMac, iMac G4, G4 Graphite, G4 QuickSilver, Mac Mini, iMac G5, MacBook and MacBook Pro are trademarks or registered trademarks of Apple Inc. in the United States and/or other countries. Other product(s), font(s), and company names and logos may be trademarks or registered trademarks of their respective companies.

Macware, Inc.
Omaha, Nebraska
USA
www.macXware.com



TABLE OF CONTENTS

PRODUCT REGISTRATION.....	3
USING WEBGHOST	3
Why does WebGhost ask for my administrator password?	3
Console	3
Public Proxies	6
Safari Tools	7
PREFERENCES.....	9
COMPATIBLE BROWSERS.....	10
GETTING TECHNICAL SUPPORT	10

PRODUCT REGISTRATION

Registering WebGhost™ is important. Registration provides you with timely access to the latest product updates, technical support, valuable information about new product releases, articles, tips and hints, and special offers on other products by Macware, Inc.

You can register WebGhost online at:

www.macXware.com/Register.asp

USING WEBGHOST

Thank you for purchasing WebGhost.

WebGhost protects your privacy by making you invisible online and cleaning your internet tracks.

To get started with WebGhost, follow these steps:

1. Drag the WebGhost application into your computer's Applications folder
2. Double-click the WebGhost application to launch it
3. The first time you launch, you'll be guided through a series of setup steps

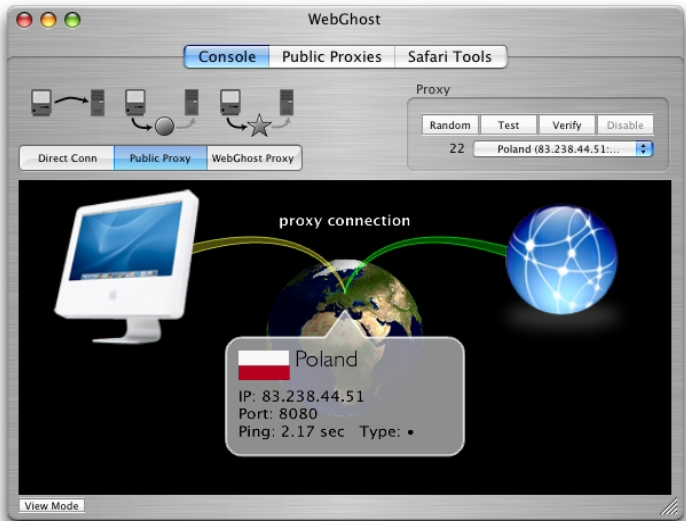
Why does WebGhost ask for my administrator password?

The first time you run WebGhost it will ask for your administrator password. It needs this password in order to change your system's proxy configuration. WebGhost does not install any system software or make any low-level changes to your system. It only alters your network configuration.

After WebGhost is launched, you'll be presented with the WebGhost Console window. This is where you manage your Internet connection. At the top are three tabs: Console, Public Proxies, and Safari Tools.

Console

The Console window is the main control panel for WebGhost. This is where you turn your privacy protection on and off, and view the status of your connection.



Direct Connection

As the name implies, selecting this will connect your computer directly to the Internet. The Direct Connection option removes any WebGhost protection by disabling the connection to any public proxy server or the private WebGhost proxy server. With this option selected, your connection is simply routed straight to the Internet without any protection or anonymity.

To enable WebGhost's protection, click either the "Public Proxy" or the "WebGhost Proxy" (recommended).

Public Proxy

Your web connection is controlled by WebGhost, allowing you to use either the WebGhost proxy server or a public proxy server (Direct Connection is not recommended).

Public proxy servers are located throughout the world and are updated daily to protect your online identity from others. They do a great job masking your IP address, but their reliability cannot be guaranteed because they are not directly managed by WebGhost.

The Public Proxies option selects from a list of publicly available proxy servers. These are the same open servers that can be found on many Internet proxy listing sites, and therefore they are heavily trafficked. As a result, they are often slower and less reliable than the WebGhost proxy, which is dedicated to only registered WebGhost users.

The Public Proxies in WebGhost's list are categorized with one, two, or three dots to represent good, better, or best anonymity.

Good (•): The proxy server sends your computer's IP address to the target host in a special HTTP variable. This means that the host is able to find out your IP address, but will have to take special measures to do so. The host will need to know what field to look at for your IP address, and specially log it. Most hosts do not go to this trouble.

Better (••): The proxy server does not send your IP address to the target host. It does identify itself as a proxy server. Although the target host cannot determine your IP address, it can tell that you are using a proxy server.

Best (•••): The proxy server does not send your IP address to the target host. Nor does it identify itself as a proxy. The target host is unable to determine your IP address. It is also unable to determine that you are using a proxy.

Choosing a Proxy

When you launch WebGhost, it automatically tests all the public proxies in its list to determine whether or not they're accessible. Only those proxies that were contacted are added to the pop-up menu in the Console view. This menu shows you a quick at-a-glance view of all the public proxies, including their country, IP address, port, security level, and ping time. **As a general rule, it is best to choose a proxy with two or three dots, and the lowest possible ping time.**

- **Random:** chooses a public proxy randomly from the list.
- **Test:** re-tests the currently-selected proxy to determine if it is accessible. If not, it is removed from the list.
- **Verify:** opens a web page displaying your IP address, as seen by web servers on the Internet. If you are using a 2 or 3 dot proxy, your real IP address should not be exposed on this page.
- **Disable:** de-activates the selected proxy and removes it from the list.

WebGhost Proxy

Purchasing a subscription to WebGhost includes access for one full year to the private WebGhost proxy server. Unlike public proxy servers, the WebGhost proxy server provides full anonymity and privacy protection. It does not log traffic, and it is restricted to registered users of WebGhost. This prevents it from being inundated with user traffic, as is the case with many of the public proxies.

Also, with public proxy servers, security cannot be guaranteed; although public proxy servers do a great job of hiding your IP address, these servers may log your online activity for their own use and information. For these reasons, the use of the WebGhost proxy server is highly recommended.

At the end of your year term, WebGhost will ask you to renew your subscription in order to continue using the private WebGhost proxy server. You can continue using any available public proxy without renewing your WebGhost subscription.

Logging In

When connecting through the WebGhost Proxy, your browser will prompt you for your username and password. This login step is necessary to maintain the Proxy's quality. As a convenience, you can click the "Don't show again" button to tell your browser to remember the login information and not ask for it again. The login information is as follows:

Username: webghost3

Password: Your full serial/registration code, as shown on your original software packaging or given to you in your email (for downloaded purchases).

Once connected to the private WebGhost proxy server, you can click the "Verify" button in the Console window to bring up a web page showing your anonymity. You can also verify your anonymity with other IP-reporting sites, such as ipchicken.com.

Public Proxies

The "Public Proxies" tab at the top of the console window gives you more control over the public proxies list available in the Console window.

The screenshot shows the WebGhost application window with the 'Public Proxies' tab selected. The main window is divided into several sections:

- Public Proxies Table:** A table with columns: act, use, Loc, IP, prt, png, Type, Test. It lists various proxy servers with their locations, IP addresses, ports, ping times, and test results.
- Public Proxy Info:** A panel showing details for the selected proxy: Location: Russia, IP: 87.228.58.238, Port: 3128, Last Test: Success, Today, 14:30, Ping: 0.94 sec, Type: ●●●. It includes an 'Include in menu' checkbox and a 'Test' button.
- User Proxies:** A section for managing user-defined proxies, with a table and a 'Configure Filters' button.
- User Proxy Info:** A panel for details of a user proxy, showing Location, IP (No Selection), Port (No Select), Last Test: Last Test, Ping: 10.00 sec, Type: 10.00 sec, and an 'Include in menu' checkbox with a 'Test' button.
- Proxy Filters:** A sidebar on the right with the following settings:
 - Enable auto proxy filtering:** Checked.
 - Ping Times:** Max Ping: 5 sec.
 - Security:** Filtered to '(good) or better'.
 - Location:** Filtered to 'United States'.
 - Location options:** Radio buttons for 'No location filtering', 'Only use proxies from:', and 'Exclude all proxies from:'.
 - Results:** 22 Proxies enabled.

It allows you to modify filtering criteria so that only certain proxies are included in the list. For example, you may wish to filter based on location, or filter out all the one-dot proxies. These settings persist the next time you launch WebGhost. You can also manually enable/disable

individual proxies, or add your own proxies. To adjust these filters, simply click the “Configure Filters” button. A drawer will slide out allowing you to filter by:

1. Ping Times
2. Security
3. Location

Once you adjust the filters, WebGhost will tell you how many public proxies are available based on your filter criteria in the Results section of the Proxy Filters drawer.

Safari Tools

Use the Safari Tools window to erase or protect your online activity in Safari.

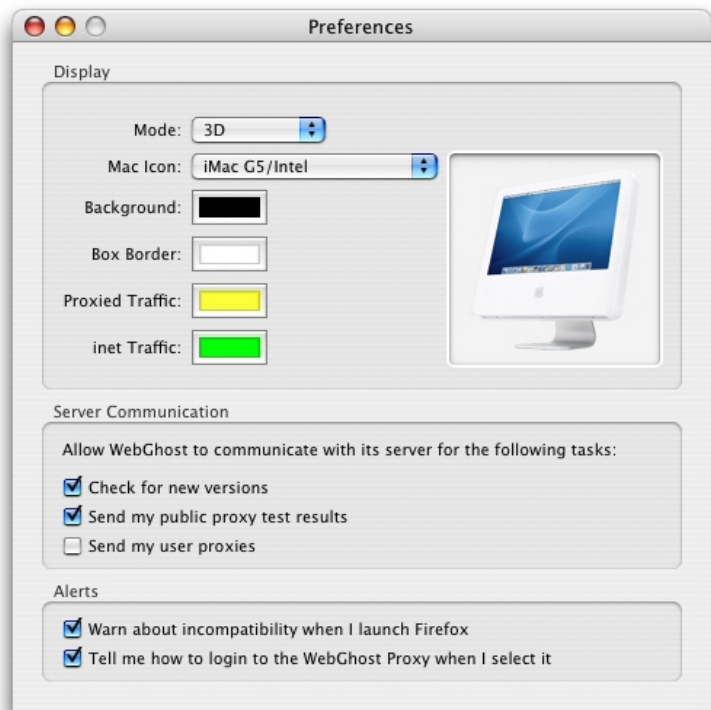


The Safari Tools tab in the Console window provides quick and easy access to Safari's functions for protecting your privacy. Much of what you do online ends up stored on your computer in the form of tracking and information cookies, what websites you visited, downloaded content from websites, what you have searched for on the Internet, and more. If you consider this information sensitive, or you just don't want others to find out what you have been doing online, use the Safari Tools to erase your tracks.

- **Sweep Safari:** the complete clean-sweep function which deletes your browsing history, cache, downloads list, cookies, saved names and passwords, other AutoFill text, and Google search history.
- **Clear History:** deletes your browsing history, so that none of your previously visited sites show up in the History menu.
- **Empty Cache:** eliminates Safari's cache of stored webpages. Safari maintains a cache for performance reasons (for quicker loading of previously visited websites), but the contents of a cache can also be viewed and used to obtain sensitive information.
- **Block pop-up windows:** toggle's Safari's built-in function to prevent websites from opening pop-up windows on your screen.
- **Private Browsing:** prevents Safari from keeping a history or a cache of the pages you visit.
- **Java Enabled:** toggles Safari's ability to execute Java content.
- **JavaScript Enabled:** toggles Safari's ability to execute JavaScript content.
- **Plugins Enabled:** toggles Safari's ability to run third-party plugins.

PREFERENCES

The Preferences window allows you to further customize the look and functionality of WebGhost.



Display

Change the icon best associated with the computer you are using, or adjust the colors of your background, proxy information box border, or traffic connections.

If you don't like the 3D globe visual of where the proxy servers are located, you can also change to Plain mode.

Server Communication

Here you can make sure WebGhost checks for new updates automatically.

You can also allow WebGhost to send information to the sites you connect to on the Internet. It is recommended you keep the "Send my user proxies" checkbox unchecked.

Alerts

The Alerts section will let you know that certain browsers are not compatible with WebGhost because they are not OS X standards-compliant.

You can also have WebGhost help you login in to the WebGhost proxy server when this option is selected.

COMPATIBLE BROWSERS

WebGhost is compatible with the following browsers:

- Safari
- OmniWeb
- Camino

WebGhost is not presently compatible with Mozilla Firefox or Netscape because they are not OS X standards-compliant.

WebGhost runs on Mac OS X 10.4 (Tiger) or later.

GETTING TECHNICAL SUPPORT

Purchasing WebGhost gives you free access to Macware's online technical support located at:

<http://support.summitsoftcorp.com/>

Email Technical Support: support@macXware.com

www.macXware.com